



Design that improves your profitability

More loaders, even greater model range
and new functions

Our loaders and implements

Quicke[®]



Q26
Q36
Q38
Q46
Q48
Q49
Q56
Q58
Q66
Q68
Q76
Q78
Q88
Q98

Q21
Q31
Q33
Q41
Q51
Q61





A front loader to make you proud

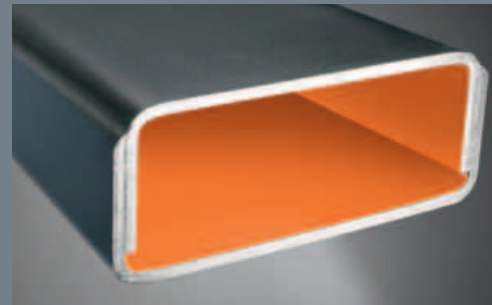
Isn't it great – that recurrent feeling that you have made the right choice? You notice it in many ways. For example, Quicke listens to what your requirements are and our loaders are designed to fit exactly to your tractor, with serviceability in mind. All in all, from quality to performance your productivity will be increased. Attention to detail at every stage that saves you time, to the end result where you can see and feel how your front loader maximises the potential of your tractor. Quite simply a win-win situation. For you, your tractor and your profitability.



Quicke Dimension is our latest range of loaders that further optimises the well renowned world leading advantages such as unique design, exclusive details and market leading performance.



KNEE PLATE. Cross-section of the loader arm by the knee bracket. The loader arm's double C profile is here strengthened with a knee plate.



UNIQUE STRENGTH FOR YOUR NEEDS. Torsional and structural strength synonymous with the market leader. You get it thanks to the unique twin "U-beams" of the Quicke loader arms, while the external appearance looks smart with all the welds facing in towards the tractor.



UNWAVERINGLY STABLE AND DURABLE. Reinforcements between the cross tube at the front of the loader and the loader arm are a tried and tested detail, which is important for Quicke loaders and their proven long service life. The placement of the cross tube contributes to a superior view and optimal front loader placement.



ROCK-STEADY SUPPORT LEGS. Heavy-duty construction with flexible design makes it quick and easy to connect and disconnect your Quicke loader. No tools are required and there are no loose parts.

Your strength

To provide strength is one thing. To maximise the power across a full range of functions is another matter entirely.

That's when you will notice the superior performance in your work and get the most out of your tractor's potential – every day, year after year. For this reason we constantly develop our products, resulting in the markets most versatile power package, with multiple advantages that pay for themselves – and more – in

many different ways. The extreme satisfaction when you look back over your working day. The high quality that becomes more obvious every year. Quite simply, a power that pays for itself and lasts longer – it is an important part of the unique Quicke feeling!

FULL LOAD WITH LARGE WORK ANGLES. This is a strong contributor to Quicke's documented high levels of usability and productivity. Of course, the design coordinates with the performance of the original implement, which further optimises your use and capacity of the equipment.



STRONG AND SMART IN EVERY DETAIL. All pins are galvanised and are equipped with Quicke's unique pin lock. The tool carrier has extra strong pins where stresses are particularly great. A hinged locking plate with a compact rubber ring prevents axial play, keeps the lubrication grease in place and fixes the pin on both sides.

OPTIMAL DIVISION OF POWER. The compact and profile-pressed bearing box is more narrow closer to the locking pin. This means that the locking pin can be made short and strong, while the wide U support provides maximum stability with heavy loader jobs on today's modern farms.



SUPER STRONG SUBFRAME. Quicke's Delta subframe has extraordinarily heavy-duty dimensions with many contact surfaces, all featuring precision work. Details such as the 60 mm wide U support and 40 mm locking pin enable the loader to cope with difficult and heavy jobs for many years.

delta

Exclusive details, just for you

Simplify your job, save time, maximise your comfort and safety. These have always been strong driving forces in Quicke's over 50 year history.

A tireless effort to create the perfect front loader for you and your colleagues the world over. This is in line with (and even a little ahead of) the rapid development of more technically advanced tractors with more powerful engines. How well have we succeeded? One thing is certain: You won't find a front loader in

the whole world with as many smart functions and innovative technical solutions than Quicke. A front loader where new ideas come as standard. Where every tiny detail is closely thought through in order to deliver the greatest possible advantages and use. For you, your tractor and your business.



IMPLEMENT CHANGES THAT INCREASE YOUR PRODUCTIVITY. Discover our unique concept for changing implements. Using our tool carrier which you rotate through 180°, you can clearly see the implement hook from the comfort of your cab, ensuring maximum control.



ULTRA COMFORTABLE SOFTDRIVE. Drive anywhere you want – in the smoothest possible way. This highly innovative dampening system has now been enhanced in conjunction with LCS, thus reducing the strain on the loader and subframes, as well as on the driver and tractor. SoftDrive is activated from the operator's cab with an electric on/off switch.



LOCK & GO ENHANCES YOUR SAFETY. Try to find a more convenient connect and disconnect system than Lock & Go. This innovation will save you time without having to compromise on safety. There are no loose parts and no tools are required. You simply connect and disconnect the loader with the minimum possible effort.



COMPACT IMPLEMENT INDICATOR. The position indicator is compact so that it doesn't stick up and cause damage or become damaged itself. It is easy to fit and can be adjusted in three positions for various implements, ensuring exact precision of the implement's angle with the ground.



Q COMPACT VALVES' MULTI-DIMENSIONAL ADVANTAGES. Our centrally-placed diverting valve has many advantages through its design. Partly in terms of function, as it gives the loader exact control and optimal power for heavy-duty tasks. The location of the valve gives optimal sight to the driver and durability, thanks to all the components being protected by the protective cover. Details such as swivelling plug-in connections and non-perishable hoses contribute to an increased service life.



SELECTO FIX. Gain time and avoid trouble. A very good aid if the front loader has an additional third or a fourth function. With a simple movement, you can easily attach the implement hydraulics without any problems, even when it is pressurised.

EXTRA EASY SERVICING – just for you Every pivot pin has a cover that ensures the lubricating grease is contained when pressure washing, thus keeping the bonnet, wind-screen and your clothes clean!

ALWAYS RIGHT, WITH CLIC-ON. Our automatic implement lock with its integrated safety function, ensures that implements only can be attached one way – the right way. Maximises safety and minimises downtime. Also notice the rigid construction.



Q LOCK – HYDRAULIC IMPLEMENT LOCKING. Simple and comfortable changes of implements without you having to get out of the driver's seat. Q Lock is connected together with the third function. Using the built-in on/off function in the Q Compact Valve, you can change implements or use the third function for implement hydraulics from the driver's seat.



Q LINK – PRECISE PARALLEL LINKAGE. Q Link is the name for effective parallel linkage. The pallet fork is always in the correct position, from the ground up to maximum height. Strong construction enables excellent handling of, for example, straw bales or pallets. If you change to a bucket, you will obtain the same exact parallel linkage, without having to make any adjustments to the loader.





PERFECT COLOUR MATCHING. Attractive and practical. With Q Link, you don't just get the most effective parallel linkage. You can also get the parallel linkage rods in colours which match your tractor. Applicable to a number of selected tractor brands. Q Link is silver as standard.



SIGHT-OPTIMISING DESIGN. No pipes or hoses that restrict your view. No dirt or rubbish that can accumulate, even if you fit extra equipment to your loader. These are the obvious advantages with Q Vision, where all pipes and hoses are protected in the loader arm.



BENEFIT FIRST AND FOREMOST. As always at Quicke, the cross tube is located far forward on the loader. This offers a number of advantages. For example, more space for the front linkage and a better view of the implement. The loaders can also be fitted further back on the tractors which increases stability and gives better driving characteristics.



Efficiency through personal design

For us at Quicke, design is not just shapes and lines. The design of the loader is also an important means of providing you with the best possible advantages.

Annually, we spend thousands of hours developing the design of everything from pins to loader arms. Our obvious focus is that our design solutions should make your work more efficient, safe and more ergonomic.

The reward is all the positive responses we have had from tractor owners the world over. It

makes us feel rather safe in the knowledge that no other front loader beats Quicke for well-thought out and closely tested design. This is a position we want to maintain and strengthen, to always be your first choice. Your challenges are therefore also ours. We are not happy until you are happy. This is why, for us, design will always be more than just about shape.



DESIGN ADVANTAGES ALL DAY LONG. Since you have to see well all the time, Quicke has a cross tube that does not hide your front lights. This enables better use of your tractor and loader at any hour of the day. An excellent example of Quicke taking that extra time to think.



WORLD-LEADING POWDER COATING. Quicke's successes are re-invested in modern production facilities. In our front loader paint shop, which is the world's most modern, loader arms are painted prior to fitting so that the finish is perfect. Durable and impact resistant powder coatings give extra good rust protection.



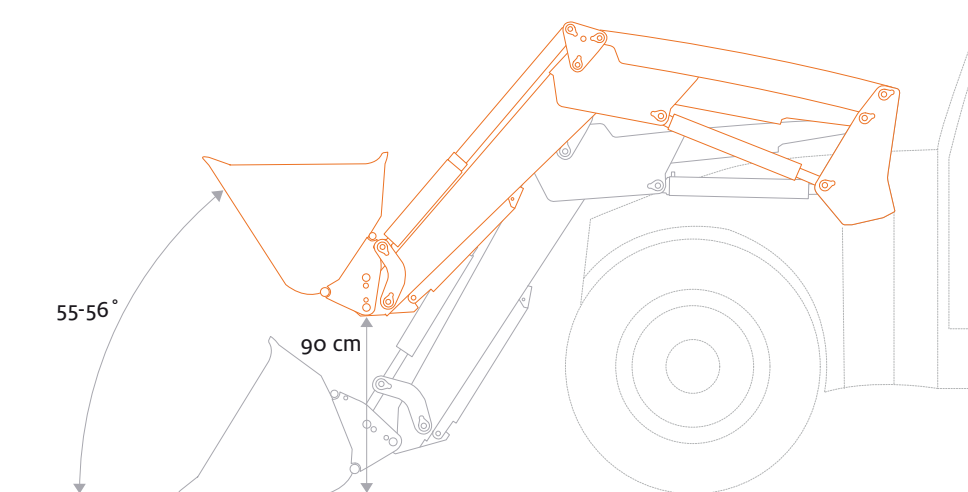
EASY TRACTOR SERVICE. A clear example of how the well-thought out Quicke design affords practical advantages. Vertical subframes and a slim bearing box give you plenty of room to carry out daily maintenance on your tractor.

Q Level – your productivity from a whole new angle

Optimal work angles for improved use of the bucket – or, put simply, more use, less spillage. All this from the latest Quicke development – Q Level.

How can we make using your loader and tractor even better for you? This is a question we constantly ask ourselves, and a development philosophy that has given Quicke the leading development market position. The latest is Q Level, an entirely new feature which maximises the capacity of bucket operation.

In practical terms, Q Level enables you to crowd up the bucket to a crowd angle of 55-56° at a height of around 0.9 m*. At operational heights there is 10 % additional crowd back compared with previous models. This results in less spillage over the front or back of the bucket.

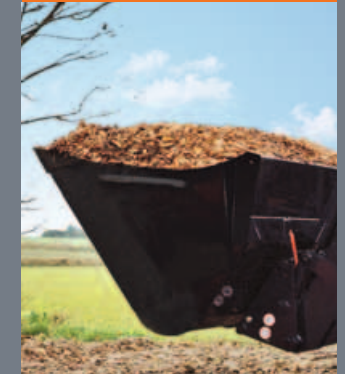


LARGER CROWD ANGLE EVEN AT LOW LIFTING HEIGHTS. With Q Level, you can crowd the bucket at an angle of 55-56° at a height of 0.9 m.

* can vary depending on the loader model.



INCREASED CROWD ANGLE at lower lift heights ensures less spillage.



MANUFACTURING DEVELOPMENT TO BENEFIT ALL OUR CUSTOMERS. The Q Level is made possible by a number of factors, including optimisations made to the implement cylinders. This is a good example of how we turn our construction expertise into customer benefits.

At operational heights there is 10 % additional crowd back compared with previous models.

OPTIMAL BUCKET DESIGN. Q Level is made possible by a number of factors. These include enhancements to our implement cylinders as well as our manufacturing expertise. Examples of how we always strive to maximise our customers experience.



 Loader Control System™

A technical breakthrough, giving you unsurpassed user-friendliness

The Loader Control System strengthens Ålö's position as the world-leading manufacturer of high quality front loaders. LCS™ brings together many technical innovations in one system:

- **AN ENTIRELY NEW TYPE OF VALVE.** The unique LCS valve program has been specially developed for the requirements and functions of the front loaders of today and tomorrow, giving a level of control that no other manufacturer can provide.
- **AN INTEGRATED MULTI-COUPLER*** which saves time and also protects the environment.
- **AN ENTIRELY NEW, THUMB-CONTROLLED JOYSTICK** which further improves ergonomics and driving characteristics.

Each one of these innovations provides significant advantages for you and your tractor. Together, they enable entirely new levels of loader control, userfriendliness, efficiency and safety.

Welcome to LCS. Welcome to the future.

* optional

One system. Hundreds of advantages.



Optimises control and driving characteristics

At the “heart” of LCS™ is a unique valve program; the only valves in the world that have been specially developed for the specific functions and requirements of front loaders. This uncompromising approach offers you many advantages: outstanding control, direct response and drivability through optimally-adapted flow – for every occasion and regardless of load weight. The valve is also energy efficient and therefore enables lower fuel consumption.

Many advantages:

- Complete control of heavy loads thanks to the load-independent oil flow. This means that the loader speed is always the same, no matter what load is carried in the implement.
- Easier to perform multiple functions, such as lowering and crowding.
- Ålö LCS™ Open Centre – the valve has the same properties as the Ålö LCS™ Load Sensing-valve. Both valves are based on the same Load Sensing principle.
- Energy-saving low pressure regeneration.
- The cylinders are always filled with oil, which eliminates waiting time and cavitation.
- Both lift and implement circuits feature a float position. In addition to improved driving benefits, this also enables easy connection and disconnection of the loader and implement.
- The compact design means that the valve is ideally placed, whilst maintaining the driver’s vision.



Smart and easy to handle with integrated electrical connector

The new unique flat-face multi-coupler with integrated electrical connector is the heart of LCS™, which, through its ingenious construction, saves time and also protects the environment. The compact design with swivel connections makes it very simple to use with a single hand. The construction of the multi-coupler means that it can be connected and disconnected even when pressurised. All quick connections are flat-face style and spill-free, making them simple to clean and maintain.

Many advantages:

- Both valves and hose kits have flat-face connections
- The multi-coupler is connected simply, with a single lever incorporating a locking catch.

Technical data

Max system pressure:	250 bar
Max tank pressure:	20 bar
Max recommended flow, fixed pump:	120 l/min
Max recommended flow, variable pump:	150 l/min
Regulated flow to loader:	Max 90 l/min
Regulated servo pressure in the valve	23 bar



Electronic, thumb-controlled user-friendliness

Topping the range, is the ElectroDrive LCS™ Professional – a thumb-controlled joystick which improves ergonomics and drivability. You will see that it offers considerably greater control as well as a more relaxed manner of working, with minimal physical exertion. The joystick has a very flexible mount; called the 'swan neck', which – in a completely new way – enables the driver to find the best position to operate the loader. The joystick's ergonomic shape and flexible mount also minimises the vibrations and movement caused by driving over uneven and rough terrain. Other significant advantages are the ideally-located display with a user-friendly menu system, giving an overview and quick access to all loader functions.

Many advantages:

- New, unique control of the electronic joystick. Choose between controlling the loader with just your thumb or with your thumb and index finger
- Optimal ergonomic shaped hand grip. Particularly advantageous when used for lengthy jobs
- Easy to use display with backlighting. Information clearly visible both during the day and at night
- The electronic joystick is available in two different types – the ElectroDrive LCS™ Professional and the EasyDrive LCS™, enabling you to adapt your LCS™ entirely to your own needs
- An alternative is the mechanical, cable-guided single lever control ErgoDrive LCS™

Which joystick meets your requirements best?

Electronic joystick or traditional cable control – you choose what suits you and your tractor best. Below you will find an overview of the functions of each joystick:



Electronic joystick, thumb-controlled	■	■	■
Mechanical joystick, cable operated	■	■	■
Backlit display	■	■	■
Fully proportional lifting and lowering of loader	■	■	■
Fully proportional tilting and crowding of implement	■	■	■
Float position on lowering movement	■	■	■
Float position on tilt movement	■	■	■
Lowering movement with regenerative function	■	■	■
Tilt movement with regenerative function	■	■	■
3rd hydraulic service*	■	■	■
4th hydraulic service*	■	■	■
Soft shifting between implement movement and 3rd hydraulic function	■	■	■
Hydraulic implement locking*	■	■	■
Quick menu			
Shock absorber, on/off*	■	■	■
Tortoise mode	■	■	■
Shake function	■	■	■
Visual AAC function	■	■	■
Transport mode with shock absorber*	■	■	■
Pressure relief function	■	■	■
On/off 3rd hydraulic service*	■	■	■
Locked 3rd hydraulic service*	■	■	■
Continuous flow 3rd hydraulic service, configurable*	■	■	■
On/off configuration of 4th hydraulic service*	■	■	■
Hare function	■	■	■
Configuration menu			
Setup of 3rd hydraulic function	■	■	■
Setup of 3rd hydraulic function on/off, (+/-) direction	■	■	■
Programmable Quick Selection button	■	■	■
Adjustable shake function in 9 steps	■	■	■
Configuration of tortoise mode in 3 steps	■	■	■
Setup of tortoise speed lift and lowering	■	■	■
Setup of tortoise speed tilt and crowd	■	■	■
Setup of display contrast	■	■	■
Diagnostics menu	■	■	■
Factory setting	■	■	■
Service menu	■	■	■
Other Features			
Spill free flat-face quick couplers	■	■	■
Multi-coupler with integrated electrical connection*	■	■	■
Integrated accumulator	■	■	■
Dust cover	■	■	■
Valve that does not effect the tractor system pressure	■	■	■
Built-in pre-heating function in the valve	■	■	■

* depending on the loader configuration

Choose your own world leader



Front loaders with parallel linkage

Working angles*, min. crowd angle⁴
min. dump angle⁵

Q26

41°
63°

Q36

44°
58°

Q38

44°
58°

Q46

43°
60°

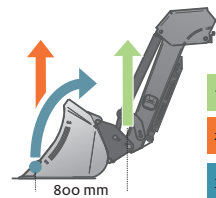
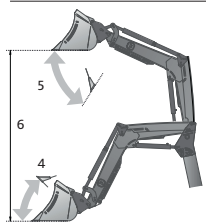
Lift height, metres at pivot pin
metres under level implement⁶ *

3.20 m
2.90 m

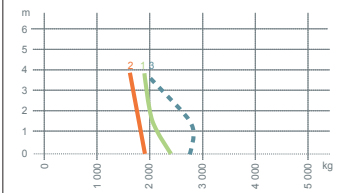
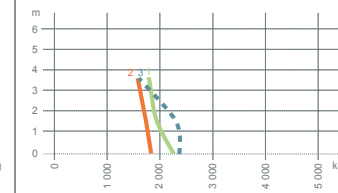
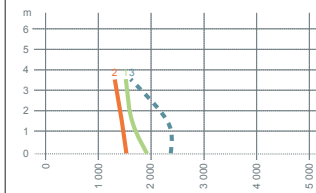
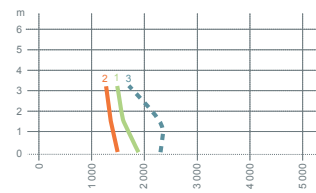
3.50 m
3.20 m

3.50 m
3.20 m

3.75 m
3.45 m



- 1 Lifting force at pivot pin
- 2 Lifting force 800 mm from pivot pin
- 3 Max. rollback force 800 mm from pivot pin



Lifting force at 195 bar/2,828 PSI

1. at pivot pin, ground level***
at pivot pin, max. lift height***
2. 800 mm from pivot pin, ground level
800 mm from pivot pin, 1.5 m lift height
800 mm from pivot pin, max. lift height
3. Max. rollback force 80 cm from pivot pin

1,890 kg
1,490 kg

1,920 kg
1,520 kg

2,270 kg
1,800 kg

2,400 kg
1,900 kg

1,500 kg
1,370 kg
1,280 kg

1,530 kg
1,440 kg
1,310 kg

1,840 kg
1,740 kg
1,590 kg

1,910 kg
1,800 kg
1,630 kg

2,310 kg

2,380 kg

2,380 kg

2,770 kg

Loader weight

505 kg

521 kg

521 kg

585 kg

Tractor Size

Approx. 50-70 hp, 37-52 kW**

Approx. 50-80 hp, 37-60 kW**

Approx. 50-80 hp, 37-60 kW**

Approx. 60-100 hp, 45-75 kW**

Recommended tractor weight

3,000 kg

4,000 kg

4,000 kg

4,500 kg

*Varies depending on implement. **In addition to engine strength, the tractor's weight and size influence your choice of loader. ***Excluding implement.

products



Q48

Q49

Q56

Q58

Q66

Q68

43°
60°

44°
55°

45°
55°

45°
55°

45°
52°

45°
52°

3.75 m
3.45 m

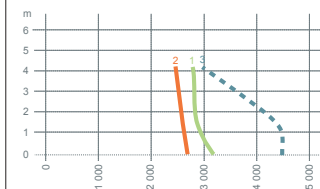
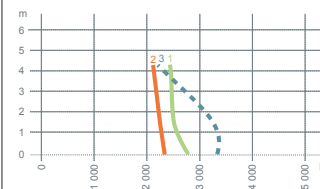
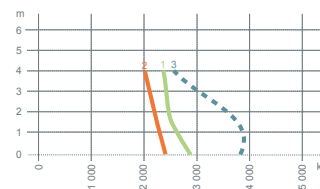
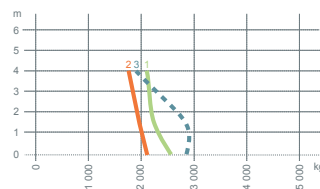
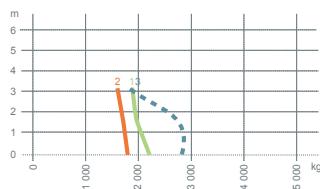
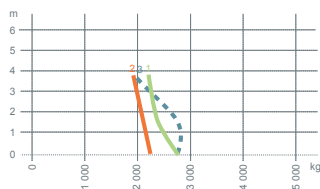
3.90 m
3.60 m

4.00 m
3.70 m

4.00 m
3.70

4.25 m
3.95 m

4.25 m
3.95 m



2,770 kg
2,210 kg

2,220 kg
1,890 kg

2,520 kg
2,060 kg

2,890 kg
2,370 kg

2,790 kg
2,440 kg

3,170 kg
2,780 kg

2,250 kg
2,110 kg
1,920 kg

1,800 kg
1,720 kg
1,600 kg

2,070 kg
1,930 kg
1,720 kg

2,410 kg
2,250 kg
2,010 kg

2,330 kg
2,250 kg
2,120 kg

2,680 kg
2,590 kg
2,450 kg

2,770 kg

2,830 kg

2,810 kg

3,850 kg

3,360 kg

4,470 kg

585 kg

595 kg

621 kg

621 kg

721 kg

721 kg

Approx. 60-100 hp, 45-75 kW**

Approx. 60-100 hp, 45-75 kW**

Approx. 80-120 hp, 60-90 kW**

Approx. 80-120 hp, 60-90 kW**

Approx. 100-150 hp, 75-112 kW**

Approx. 100-150 hp, 75-112 kW**

4,500 kg

4,500 kg

5,200 kg

5,200 kg

6,000 kg

6,000 kg



Front loaders with parallel linkage

Working angles*, min. crowd angle⁴
min. dump angle⁵

Q76

44°
52°

Q78

44°
52°

Q88

44°
49°

Q98

42°
50°

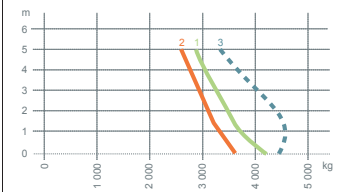
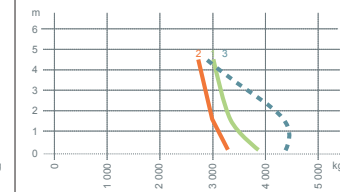
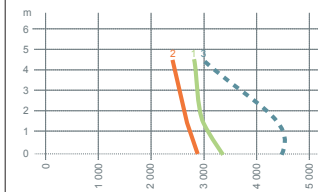
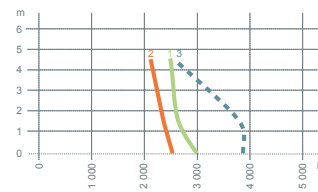
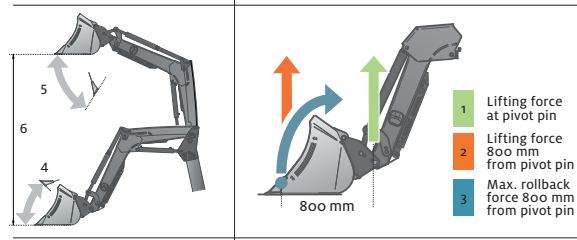
Lift height, metres at pivot pin
metres under level implement⁶ *

4.50 m
4.20 m

4.50 m
4.20 m

4.95 m
4.65 m

4.95 m
4.65 m



Lifting force at 195 bar/2,828 PSI

1. at pivot pin, ground level***
at pivot pin, max. lift height***

2,990 kg
2,490 kg

3,380 kg
2,820 kg

3,930 kg
3,070 kg

4,210 kg
2,880 kg

2. 800 mm from pivot pin, ground level
800 mm from pivot pin, 1.5 m lift height
800 mm from pivot pin, max. lift height

2,540 kg
2,370 kg
2,120 kg

2,900 kg
2,700 kg
2,430 kg

3,340 kg
3,050 kg
2,770 kg

3,610 kg
3,210 kg
2,600 kg

3. Max. rollback force 80 cm from pivot pin

3,870 kg

4,480 kg

4,460 kg

4,450 kg

Loader weight

760 kg

760 kg

838 kg

935 kg

Tractor Size

Approx. 120-190 hp, 90-142 kW**

Approx. 120-190 hp, 90-142 kW**

>150 Hp, >112 kW**

>200 Hp, >149 kW**

Recommended tractor weight

7,000 kg

7,000 kg

9,000 kg

13,000 kg

*Varies depending on implement. **In addition to engine strength, the tractor's weight and size influence your choice of loader. ***Excluding implement.

products



Front loaders without parallel linkage

	Q21	Q31	Q33	Q41	Q51	Q61
Working angles* min. crowd angle min. dump angle	41° 64°	44° 58°	44° 58°	43° 60°	46° 56°	45° 52°
Lift height metres at pivot pin metres under level implement*	3.20 m 2.90 m	3.50 m 3.20 m	3.50 m 3.20 m	3.75 m 3.45 m	4.00 m 3.70 m	4.25 m 3.95 m
Lifting force at 195 bar/2,828 PSI 1. at pivot pin, ground level*** at pivot pin, max. lift height***	2,280 kg 1,730 kg	2,310 kg 1,760 kg	2,690 kg 2,060 kg	2,810 kg 2,150 kg	2,920 kg 2,310 kg	3,220 kg 2,710 kg
2.800 mm from pivot pin, ground level 800 mm from pivot pin, 1.5 m lift height 800 mm from pivot pin, max. lift height	1,360 kg 1,230 kg 1,190 kg	1,390 kg 1,250 kg 1,220 kg	1,660 kg 1,500 kg 1,450 kg	1,730 kg 1,560 kg 1,500 kg	1,860 kg 1,680 kg 1,640 kg	2,130 kg 1,980 kg 1,970 kg
3. Max. rollback force 80 cm from pivot pin	2,350 kg	2,410 kg	2,410 kg	2,800 kg	2,840 kg	3,360 kg
Loader weight	436 kg	450 kg	450 kg	515 kg	554 kg	628 kg
Tractor Size, approx.	50-70 hp 37-52 kW**	50-80 hp 37-60 kW**	50-80 hp 37-60 kW**	60-100 hp 45-75 kW**	80-120 hp 60-90 kW**	100-150 hp 75-112 kW**
Recommended tractor weight	3,000 kg	4,000 kg	4,000 kg	4,500 kg	5,200 kg	6,000 kg

It is quite simple, really. If you use our original implements you will never have to have the second best when it comes to joy of work and profitability. You see and you sense that you always have the right tools for the job. Your jobs are always done with the maximum efficiency. Thanks to our superior quality, the fun of using our implements will last a long time – and so will the benefits. In brief, choose Quicke original implements to get the most out of your front loader.

Your choice of implement hooks

Quicke does not only give you the largest range of implements. Our implements also have a choice of hooks for use with most brands of loaders.

A: EURO

Implement hooks suitable for Quicke series Q, Trima with W-frame and other loader brands with Euro implement carriers.

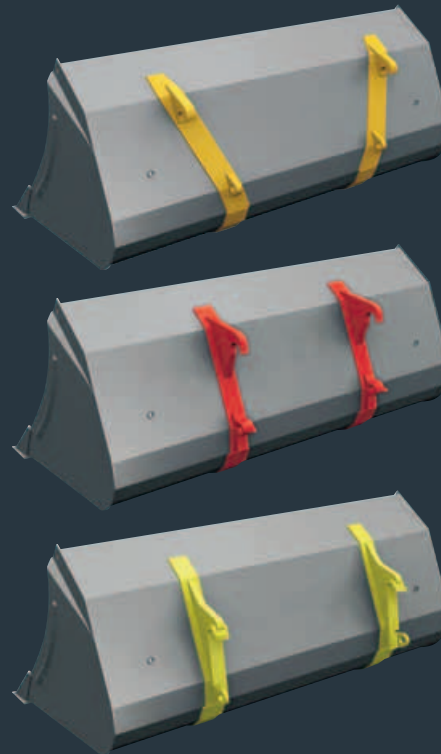
B: SMS

Suitable for Quicke Combi mount, Trima/Bergsjö with SMS-mount, Kellve/Vreten/Howard and any loader with SMS implement carrier.

C: ÅLÖ TYPE 3

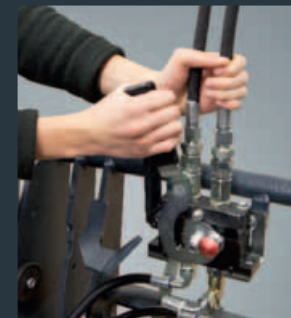
Suitable for wholly hydraulic loaders previous to Quicke Series Q.

Some implements will also fit loaders with the large and the small implement carrier from BM.

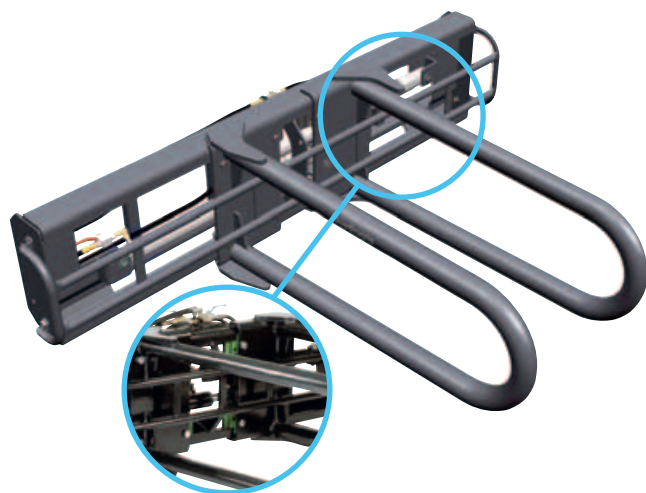


SELECTO FIX*

Save time and avoid problems. Selecto Fix is a very good aid if the front loader has an additional third or a fourth function. With a simple movement, the implement hydraulics is coupled, easily and without any problems, even when the system is pressurised. Your work is resumed within seconds. The flat face blocks are easy to clean, reducing the risk of dirt finding its way into the tractor's hydraulic system.



* Selecto Fix is available as an accessory.



Quadrogrip®

UNBEATABLE HANDLING OF ROLLED AND WRAPPED BALES, LARGE OR SMALL



IMPLEMENTS FOR BALES

Quadrogrip is the best implement on the market for handling of round and wrapped bales.

The implement arms are mounted on 350 mm wide, extremely stable sliding plates, which move along the main frame. You can lock either the left or the right tine, and this will help when stacking.

The sliding runners are serviceable and manufactured in high-quality polyethylene, and do not require

lubrication. The sliding surfaces are vertical to stop the dirt from sticking. The result is reduced friction, silent movements, minimal wear and longer service life.

SELECT THE BEST EQUIPMENT

Our implements for bales are characterised by heavy-duty bearings in the implement arms, large gripping surfaces that distribute the pressure optimally as well as a total absence of sharp edges. We accept no compromise – quality must be number one.

QUADROGRIP	200
Total width, cm	235
Bale size, cm	60-200
Arm length, cm	130
Weight, kg	433



Flexibal®

THREE IMPLEMENTS IN ONE



IMPLEMENTS FOR BALES

Flexibal is a strong and very flexible implement. The arms are operated hydraulically, with the steel tubes rolling under the bale. The steel tubes roll under the bale without damaging it when it is being handled. The generous length and diameter of the tubes distribute the pressure evenly over the bale preventing damage to the plastic wrapping when being handled. The steel tubes are quickly and easily removed when transporting straw or hay bales. When the steel tubes

are removed, Flexibal may also be used for moving pallets (max. 1000 kg).

As an option, Flexibal may be fitted with an adjustable bale support on the back of the implement. This gives the possibility to handle larger bales and to stack bales on their ends.

For safety we strongly recommend the bale support especially if the loader is without parallel linkage or for tractors without a cab.

FLEXIBAL	
Weight, kg	195
Bale size max, cm	180
Bale support, weight, kg	45



Flexigrip™

CAREFUL AND EFFECTIVE HANDLING OF LYING AND STANDING BALES



Storing bales upright on top of each other reduces the risk of air and moisture entering the bales. The implement arms are mounted on heavy duty hinges that have replaceable bushings. You can lock either the left or the right implement arm, but there is still some movement left, and this makes it possible to stack bales tightly without damaging the plastic wrapping round the bale. Additionally the implement arms are designed in such a way that it is easy to reverse away from the bale and this is advantageous when bales have to be stacked tightly. The uniquely curved and rounded shapes as well as the 90 mm tubes contribute greatly to the very careful handling of both lying and standing bales. Of special note are the long, curved tubes, formed out of one piece, without any sharp edges or welded joints. The upper extension to the tube is a special feature for Ålö, and it gives improved support when handling lying bales.

FLEXIGRIP	160	200
For bale sizes, min-max, cm	120-160	150-200
Weight, kg	262	287



Unigrip™

PROVEN ADVANTAGES IN DESIGN AND LIGHT WEIGHT



Unigrip has well proven design and a low net weight. It is used for the same tasks as Flexigrip. The choice between these two implements depends on the work routines of the individual user. Unigrip is also well suited for smaller square bales (80 x 80 - 130-160 cm). The implement arms distribute the pressure evenly over a large area, and this ensures careful handling of the bales. Unigrip gripping arms are made of large diameter tubes and have no sharp edges or welded joints. This prevents the plastic round the bales from being damaged.

UNIGRIP	130	160
For bale sizes, min-max, cm	90-130	120-160
Weight, kg	200	240



Silosplit®

SPLIT THE BALE EASILY AND CHEAPLY



Until now, splitting bales has meant hard work or considerable expense. If you have a loader with double acting lifting cylinders, this problem is solved, thanks to Silosplit.

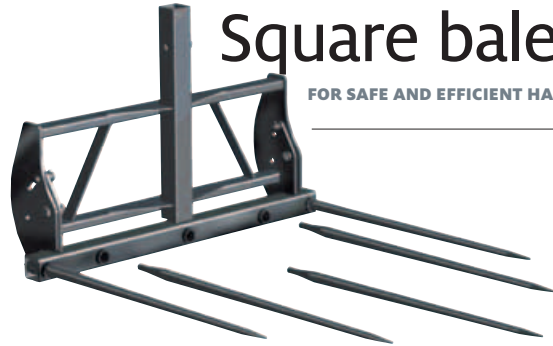
Silosplit can both transport and split bales. When you have placed the bale where it is to be split, you simply place the blade across the top of the bale and press it down. Straw and silage bales will easily split in two, simply and smoothly without the complication of additional hydraulics. After that, it is easy to handle the material. Silosplit is supplied with an easy-to-use blade guard that protects the sharp cutting edge.

SILOSPPLIT	
Weight, kg	110
Width, cm	120
Reach, cm	170



Square bale fork - Safety

FOR SAFE AND EFFICIENT HANDLING



The bottom box section of the Square Bale Fork is hinged, and this is an important safety detail. Firstly you can lock the tines in the upright position, increasing safety when driving, particularly on public roads. Secondly, the handling of bales is more effective and safer. When unloading, the bales are pushed into place using the main frame. If unloading takes place at full height, the top bale is pushed into place using the upper section of the implement and without pressing the long tines into the bale. Therefore there is no risk of the bale falling back out when you reverse.

The Square Bale Fork can be supplied with two different bottom frames. The 190 cm wide frame is suitable for long large bales. The 140 cm frame is supplied with two tines as standard, but this may be increased to a total of five tines if the client requires it. The Square Bale Fork can be supplied with rear extension (for handling several bales simultaneously) or with a Bag hook (for lifting large sacks) as optional equipment. (Maximum load on the bag hook is 750 – 1250 kg depending on height).

SQUARE BALE FORK - SAFETY	140	190
Weight, kg	133	168
Width, cm	140	190
Number of tines, std	2	5
Tine length, cm	125	125

Bale spike

SIMPLE AND EFFECTIVE



The bale spike is particularly well suited to handling round bales. The longer tine is used to safely transporting the bale. The shorter tine stops the bale from rotate.

BALE SPIKE	
Weight, kg	60
Width, cm	115
Tine length, cm	125

Square bale fork - Standard

FOR ROUND AND SQUARE BALES



The Square Bale Fork is a simple and sturdy implement for both round and square bales. The tines in the lower box section can be installed 80 or 130 cm apart. The Square Bale Fork may be supplied with a U-shaped Rear extension that supports the top bale as an optional extra.

The rear extension is a safety device that we strongly recommend especially if the loader is without parallel linkage or for tractors without a cab.

SQUARE BALE FORK - STANDARD	
Weight, kg	78
Width, cm	140
Number of tines, std	2
Tine length, cm	82 or 125
Rear extension, weight, kg	42

Durable productivity



Silocut®

VERSATILE AND EXTREMELY RELIABLE

Silocut is a versatile and extremely reliable implement with low maintenance costs.

Thanks to the hardened cutting blades at the front edge and side sections, Silocut leaves a clean cut surface in the silage. This prevents the admission of air and generation of heat, critical for the quality of the silage. Note in particular the angled side blades that cut against the side plate at the rear of the implement. This function ensures a maximum cutting force.

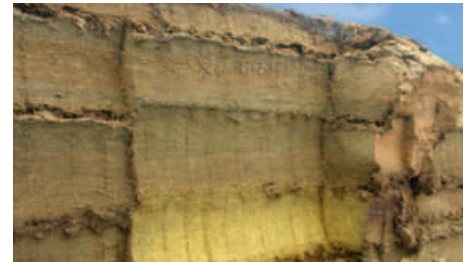
Box section with high quality sturdy tines.

The box section is extra strong, designed for durability and long service life.

The fully enclosed grab frame prevents any loss of all types of silage particularly maize silage.

Silocut 190 and 230 are also available for loaders with the large BM implement carrier.

SILOCUT	120	150	190	230
Weight, kg	420	490	625	720
Block size max, cm	120x78x77	150x78x77	190x78x77	230x78x77
Block volume max, m ³	0.72	0.90	1.14	1.38
Opening, cm	77	77	77	77
Number of tines	9	12	15	18
Working width, cm	120	150	190	230



Strong and effective



Powergrab™

POWERGRAB™ – YOUR NEEDS, OUR INSPIRATION



SILAGE IMPLEMENTS

This new design was inspired by your requirements. A very powerful universal implement with high work throughput. Well suited for silage as well as for many other demanding grabbing and scooping tasks.

Powergrab is first of all designed for handling silage, but is also suitable for various grabbing and scooping work in agriculture, council and lesser contract work.

When taking silage, the Powergrab is angled down at about 45 degrees into the silage, and this gives the maximal yield possible when the grabber is closed. The design of the teeth in the grab and in combination with

rotating the grab downwards, creates an even block of silage without creating any air pockets and generating heat in the silage. The conical shape of the Powergrab makes filling and emptying a simple job. All the material is easily accessible, even along the walls, since the grabber part opens considerably.

Note! Should not be used on loaders with combination implement carrier. At max opening and max brake-up, the implement will interfere with the implement cylinders of the loader.

POWERGRAB	185	210	240	260
Weight, kg	540	650	690	780
Width, cm	185	210	240	260
Volume, m ³	1.0	1.15	1.30	1.40
Depth, cm	82	82	82	82





Silograb®

UNUSUALLY STRONG AND EFFECTIVE



Silograb is an extremely versatile implement. The close spacing of the tines practically eliminates the spilling of silage. The tines are mounted in a box section with welded sleeves. The tines make a circular motion through the material, which produces the cleanest cut, the least power requirement and the longest service life for the tines. In addition, the material is pressed against the back of the implement when the tines are lowered, keeping the silage in place even when driving over uneven terrain.

All models have two hydraulic cylinders. On the large models the cylinders are 15% larger than on the smaller models. Models 210 to 250 have strengthened supports in the upper part.

SILOGRAB	130	150	170	190	210	230	250
Weight, kg	254	274	304	325	365	380	408
Width, cm	130	150	170	190	210	230	250
Volume, m ³	0.69	0.79	0.90	1.01	1.11	1.22	1.33
Depth, cm	85	85	85	85	85	85	85
Number of tines in the grabber	7+7	8+8	9+9	10+10	11+11	12+12	13+13

Multibenne™

THE PERFECT ALL-ROUND IMPLEMENT



SILAGE IMPLEMENTS

If you have a diet feeder that has to be loaded with various feeds, Multibenne is your best choice. The requirements and demands to which we have paid particular attention are: It should be perfectly suited for its purpose – namely silage handling. Therefore the sides are tapered so that they can be inserted more easily into the silage. When the implement crowded back the side plates are utilised so that loose material is not lost. A relatively short bottom section makes it easier to fill the bucket, all the way to the back. In this way, the centre of gravity moves towards the loader, and when unloading into high-sided vehicles, the bucket tip does not enter too far into them. The closed bottom section and the close spacing of the tines result

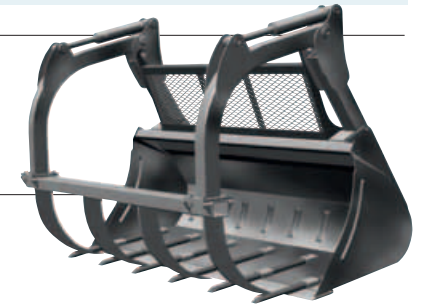
in reduce losses from spillage.

The closed bottom piece of the bucket ensures that all the material is always completely gathered up. Multibenne, designed according to the same principles as Silograb, can handle many different types of fodder, and manure as well. Therefore you need not change implements when feeding your animals.

MULTIBENNE	130	150	170	190	210	230	250
Weight, kg	280	304	360	386	423	447	477
Width, cm	130	150	170	190	210	230	250
Volume, m ³	0.66	0.76	0.86	0.96	1.07	1.17	1.27
Depth, cm	80	80	80	80	80	80	80
Number of tines in the grabber	7	8	9	10	11	12	13

Maxi Grapple™

HIGH CAPACITY AND FLEXIBILITY



SILAGE IMPLEMENTS

The bucket is based on the sturdy and reinforced HD bucket. The grapple arm is mounted to the rear of the bucket, and this contributes to the power of this implement. The moving upper section of press-formed profiles is fitted with sturdy bearings, three-layer bearings and heavy pivot pins with heavy-duty locks. The section with the powerful teeth is bolted on. Stress and torsion forces are in this way transmitted to the entire implement. The teeth (version T) are simply attached in the bucket bottom. The protective mesh is a safety device that prevents material from falling onto the tractor (optional extra). It is strongly recommended especially

if the loader is without parallel linkage or for tractors without a cab. Maxi Grapple is used particularly in the US and Canada for handling round bales (large 2 m opening), loose hay, brush and branches, loose silage, manure and for bucket work generally. Teeth, protective mesh and the grapple arm are easy to remove when you need to use just the bucket.

MAXI GRAPPLE	210	210T	240	240T	260	260T
Weight, kg	605	620	640	655	710	730
Width, cm	210	210	240	240	260	260
Depth, cm	81	81	86	86	86	86
Teeth, cm	-	24	-	24	-	24



Stone fork

PRODUCTIVE AND SERVICE-FRIENDLY

FORKS



“Pick up and keep”. The distinctive design provides considerable potential to fill the implement without dropping any of the stones already in the bucket. At the front end are mounted special, downwards-pointing tines made of Hardox steel. After many hours of hard work, it is then easy to replace these tines. The cross tubes (50 x 100 mm) stabilize the 30 mm tines. Please also note that the back end of this model is higher than that of previous models.

STONE FORK	150	200
Width, cm	150	200
Depth, cm	100	100
Height, cm	73	73
Number of bottom tines	14	18
Tine spacing, cm	11	11
Weight, kg	237	296



Manure fork

MORE STABLE AND MORE RESILIENT THAN MOST

FORKS



Three advantages make a big difference: Our manure forks have a specially manufactured bottom beam with welded sleeves for the tines that will not be deformed or bent when in use. The tines are fitted before painting the implement – metal touches metal. The tines are tightened to a very high torque. All-in-all this gives you an implement with a long service life.

MANURE FORK	130	150	170	190	230
Weight, kg	123	136	152	165	203
Width, cm	130	150	170	190	230
Depth, cm	85	85	85	85	85
Number of tines	7	8	9	10	12



Counter-weight

A SIMPLE WAY TO IMPROVING STABILITY

ACCESSORIES



The counter-weight improves the stability of the tractor/loader unit. Connection and disconnection is simply done using the attached coupling shaft.

The counter-weight helps to:

- improve stability and the distribution of weight
- lower the loads on front wheels and axle
- improve ground contact, which in turn improves traction

COUNTER-WEIGHT	
Weight, empty	186 kg
Weight, filled (not factory filled)	212 kg
	800 kg with concrete
	1000-1200 kg with concrete



3-point linkage

MORE POSSIBILITIES

ACCESSORIES



This implement can be used like the tractor's 3-point linkage to help move some implements around the farm. Available with either Euro or SMS hooks.

3-POINT LINKAGE	
Weight, kg	78

Big bag lifter

SIMPLE AND SECURE PRODUCTIVITY



For safe handling of large bags. The height of the hook above ground level is normally the same as when the bottom of the large bag is level with the lowest point of the front loader when the bags are hanging from the big bag lifter. Notice the practical benefit of having the hook bent to one side. It is easy to see the hook from the driver's seat.

BIG BAG LIFTER

Weight, kg	118
Max load, kg	800
Width, cm	120
Height, cm	170



Pallet forks

MAXIMUM DURABILITY AND STABILITY

The upper support of the backframe is made in one piece. The beam has holes for lateral adjustment and provides secure positioning of the forks. The load is distributed over a large area thanks to the large load-bearing surfaces of the forks. This special design gives you a stable fork that never tilts or wobbles. Naturally, the forks are designed with a wide margin of safety in mind.



PALLET FORKS	1000 kg	1600 kg	2500 kg
Weight, kg	122	160	170
Max load, kg	1000	1600	2500
Width, cm	140	140	140
Fork length, cm	97	97	120
Fork height, cm	50	95	95
Fork type	forgings	forgings	forgings

Bale spike attachment

SIMPLE AND FLEXIBLE

Accessories – pallet forks

Bale spikes (one short and one long). For mounting on the pallet fork sub-frame.

BALE SPIKE

Weight, kg	24
------------	----

Log grab attachment

FOR A BETTER GRIP

Accessories – pallet forks

Suitable for 1000 kg, 1600 kg, and 2500 kg pallet forks

LOG GRAB ATTACHMENT

Weight, kg	85
------------	----



Buckets for all needs

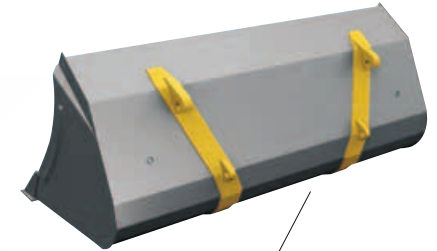
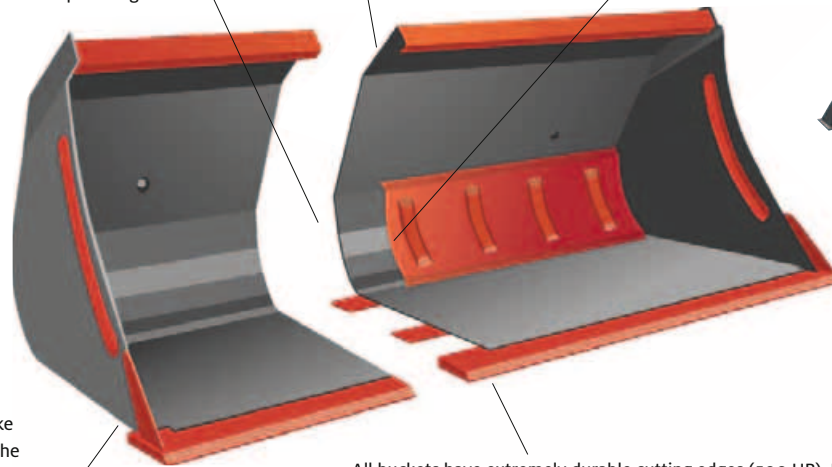
All buckets are conical and easy to fill, because the material does not have to be forced into the bucket. The conical, “hopper-shaped” design also allows for rapid and complete emptying of the bucket. Whatever your needs are or what demands you have, you will be able to find your new bucket in our range. There are a total of seven different models and 24 versions. There is also a special, high-tip bucket and a grading bucket.

THE NON-SPILL BUCKET

The buckets have a rounded bottom and conical shape. Numerous small folds make for a durable bucket, and the conical design allows for simple filling and complete emptying.

The upper edge of the bucket back ends with a U-beam. On the HD and HDV buckets this area has an additional angle profile welded all along the width of the bucket.

In order to have even greater torsional strength and stability, the wider buckets are fitted with an additional, profiled back-plate (not on L and LV models). Using a special overlap design, the HV buckets have a hole profile along the implement hooks, and this makes these large buckets stronger and more stable.



The implement hooks contribute to the strong design. You will notice that hooks and locking holes are positioned along a fold in the metal. Depending on bucket model and size, there may be a double profile sheet inside the bucket.

The sides have side reinforcements that make them even stronger. At the very bottom there is welded a triangular wear-piece, which simultaneously stabilises the cutting edge. On the HD buckets, this wear-piece runs all the way up along the side.

All buckets have extremely durable cutting edges (500 HB). Depending on bucket model and size, 12, 16 or 20 mm thick and 100, 150 or 200 mm wide cutting edges are used. Together with the parallel wear-pieces this makes the bucket bottom strong, resist torsion and hard-wearing.

NON-DROP DESIGN

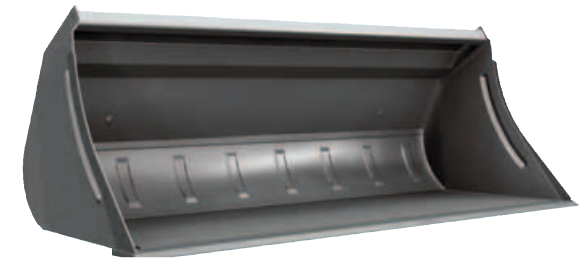


Naturally it has been our aim to design and produce a bucket that does not allow spillage. What is the point of having a large volume bucket if you cannot fill it properly, or if material spills out of it? Therefore our buckets have sides that are laser-cut. The result is a bucket design where the rear edge and the front edge in particular are especially high. It is now possible to fill the bucket completely. You have complete control of the material, and the bucket does not spill any material.

THE RIGHT BUCKET – EVERYTIME

FIELDS OF APPLICATION	H	HT	HD	HDV	HV	L	LV	High tip	Grading bucket
Lighter digging and loading	●					●			●
Loading of grain, chips and snow	●			●	●	●	●	●	
Loading of material higher up								●	●
Heavy digging and loading	●	●	●	●					
Work in gravel/sand, earth and stones	●	●	●						
Contract work in gravel/sand, earth and stones	●	●	●						
Grading	●		●						●
Professional clearing of snow	●		●	●	●				

● Best choice ● Good choice



Series H

THE SOIL BUCKET – STURDY AND VERSATILE FAVOURITE



The soil bucket – the most popular in our range – can do anything. The short bucket bottom makes the bucket strong and well suited to heavier tasks. The three larger buckets have an extra rounded profile back plate across its full width.

SERIES H	135H	160H	185H	210H	240H
Volume (heaped), m ³	0.54	0.65	0.72	0.82	0.95
Width, cm	135	160	185	210	240
Depth, cm	81	81	81	81	81
Height, cm	75	75	75	75	75
Cutting edge WxT, mm	150/16	150/16	150/16	150/16	150/20
Weight, kg	147	166	205	252	294

Series HT

A SOIL BUCKET WITH TEETH - FOR ALL KINDS OF HEAVY AND DEMANDING JOBS.



Soil bucket with teeth. The same design as for the Series H.

SERIES HT	135HT	160HT	185HT	210HT
Volume (heaped), m ³	0.54	0.65	0.72	0.82
Width, cm	135	160	185	210
Depth, cm	81	81	81	81
Height, cm	75	75	75	75
Cutting edge WxT, mm	150/16	150/16	150/16	150/16
Number of teeth	6	7	8	9
Weight, kg	152	172	211	259

Series HD

STURDY CONTRACTORS BUCKET



Contractors bucket. This is the sturdiest bucket in our range together with our HDV buckets. This bucket is based on the H bucket. On the 210, 240 and 260 versions the steel is 20% thicker. Also, the HD buckets have thicker cutting edges, wider and longer bottom reinforcements, an extra angle reinforcement inside the bucket next to the implement hooks as well as an angled wear-plate at the back of the bucket.

SERIES HD	185HD	210HD	240HD	260HD
Volume (heaped), m ³	0.72	0.82	0.95	1.03
Width, cm	185	210	240	260
Depth, cm	81	81	86	86
Height, cm	75	75	75	75
Cutting edge WxT, mm	150/20	150/20	200/20	200/20
Weight, kg	227	314	340	365



Series HDV

OUR STURDIEST VOLUME BUCKETS

BUCKETS



These volume buckets are designed for professional users with larger tractors that use them a lot and/or lift heavy weights and who therefore have severe requirements for ruggedness and durability. The obviously sturdy design is noticeable in the steel plates that are 20% thicker compared to our other HV versions. This Heavy Duty Volume version is available in three sizes of 2.10, 2.40 and 2.60 meters.

SERIES HDV	210HDV	240HDV	260HDV
Volume (heaped), m ³	1.50	1.70	1.85
Width, cm	210	240	260
Depth, cm	109	109	109
Height, cm	98	98	98
Cutting edge WxT, mm	200/20	200/20	200/20
Weight, kg	416	434	471

Series HV

A LIGHT MATERIALS BUCKET – STURDY AND VERSATILE FAVOURITE

BUCKETS



A sturdy material and snow bucket. This series is aimed at users that need to move large volumes. The generous volume is achieved by designing the bucket deeper and taller. All models have a double profile in the bottom as well as beside the implement hooks. That means that there is extra strength where the stresses are the greatest.

SERIES HV	200HV	220HV	240HV	260HV
Volume (heaped), m ³	1.16	1.28	1.70	1.85
Width, cm	200	220	240	260
Depth, cm	104	104	109	109
Height, cm	85	85	98	98
Cutting edge WxT, mm	150/16	150/16	200/20	200/20
Weight, kg	273	294	415	443

Series L

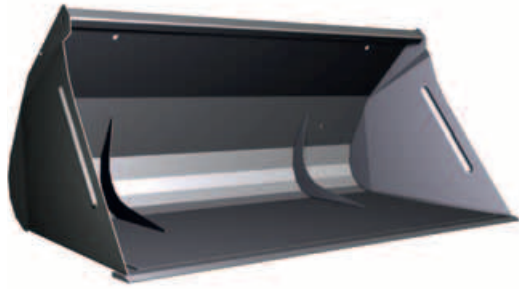
A COMPETITIVE BUCKET FOR LIGHT DUTY WORK

BUCKETS



A light bucket. The L bucket is an excellent choice if you only need it for light duties. This means that the price is extremely competitive.

SERIES L	130L	180L
Volume (heaped), m ³	0.51	0.71
Width, cm	130	180
Depth, cm	80	80
Height, cm	75	75
Cutting edge WxT, mm	100/12	100/12
Weight, kg	123	163



Series LV

PERFECT FOR MATERIALS WITH LOW VOLUME WEIGHT.



A bucket for light materials. This series of buckets is suitable for handling grains, grass seeds, wood chips and other materials with low volume weights. The buckets have two vertical reinforcements next to the implement hooks.

SERIES LV	200LV	220LV
Volume (heaped), m ³	1.13	1.25
Width, cm	200	220
Depth, cm	100	100
Height, cm	85	85
Cutting edge WxT, mm	100/16	100/16
Weight, kg	221	239



Grading bucket

A STURDY AND OPTIMIZED DESIGN



A heavy-duty grading bucket. The operator has a perfect view of the tip of the bucket thanks to the low back plate and the long, strong bottom plate. The bucket has a 20 mm heavy duty cutting edge. At the rear, under the 20 mm mounting plates is a welded 10 mm angle iron, which reinforces the bucket for grading jobs.

GRADING BUCKET	200	240
Volume (heaped), m ³	0.73	0.83
Width, cm	220	240
Depth, cm	110	110
Height, cm	50	50
Cutting edge WxT, mm	150/20	200/20
Weight, kg	337	408



High tip bucket

EFFECTIVE HIGHER UP



The high tip bucket increases the unloading height by 120 cm. That means that even a short and compact front loader can fill a tall trailer when needed. The bucket pivots at the front edge, and therefore it is not necessary to wait for the front edge to be over the side of truck/trailer before you reverse. This saves time and increases the efficiency. High tip buckets are used for handling high volume materials high up, for example loading grains, grass seed, beets or wood chips.

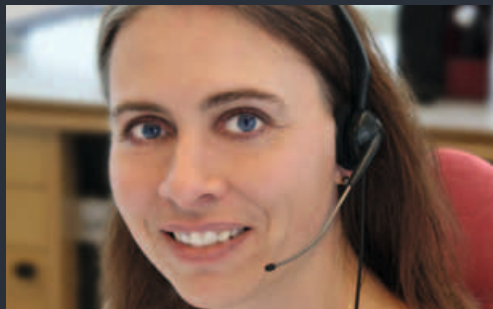
HIGH TIP BUCKET	
Volume (heaped), m ³	2.00
Width, cm	230
Depth, cm	120
Height, cm	120
Cutting edge WxT, mm	150/20
Weight, kg	480

As a Quicke owner, you not only have a world-leading front loader, but you also have a world-leading level of reliability. Your purchase does not end our commitment to you – it's only the beginning.

Always close to you!

Your Quicke has to perform at its best for a long time, and this is made easier if you are close to locations for service, spare parts and knowledgeable support. This is why we have purposefully built up a strong global organisation with a comprehensive service network. This means that you have access to quick and competent service wherever

you operate in the world. You can also be sure that our service and support is developed from the same lofty ambitions as our products – always aiming for 100 per cent happy customers!



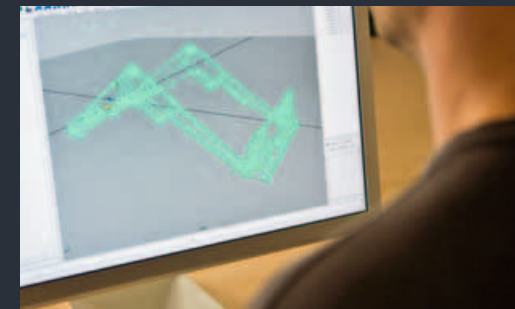
ABSOLUTE CUSTOMER FOCUS. In order to support you as a customer, we have created routines that ensure all the departments in our organisation are concentrated on your requirements.

QUICK INTERNET HELP. On the internet, you have access to spare part details, instructions and other important information.



TIGHT-KNIT SPARE PART NETWORK. Spare parts are available from our subsidiaries as well as from larger Quicke representatives the world over.

PROXIMITY. Our world-leading distribution network guarantees proximity to you, no matter where you are.



GLOBAL TECHNICAL SUPPORT. As a Quicke customer, you always have access to prompt technical support. Throughout the world, our representatives can provide knowledgeable and high-quality service.

CONSTANT FOLLOW-UP. Your viewpoints and suggestions for improvement are gathered together and centrally processed. This follow-up functions as a valuable basis for us when developing new loaders, implements and subframes. The development of Quicke is the result of close cooperation with users all over the world!



Quicke®
www.quicke.nu



Ålö
www.alo.se

Ålö AB
Brännland 300, SE-901 37 Umeå, Sweden
Tel: +46 (0)90 17 05 00
Fax: +46 (0)90 17 05 99

Some front loaders in this brochure are fitted with extra equipment. Certain products may be optional extra equipment. Some of the products are not available on all markets. Product specifications and performance data stated can vary depending on the tractor model. Working with front loaders and accompanying implements is not without risk. Serious injuries to people and damage to materials can occur in the event of incorrectly carried out work. Show consideration to your surroundings, use common sense and comply with local laws and regulations. Always read carefully through the instruction manual supplied. Only use original spare parts and accessories. Ålö's product range is continually being developed. We reserve the right at any time to alter specifications, prices and versions with no obligation on our part.
©,™ Trademarks of Ålö AB.